



Valley Ridge Elementary School

STEM Academy Campus Profile

SCHOOL HOURS ONLINE

7:45 a.m. to 3:25 p.m. **GRADES** Pre-K through 5th grade
lisd.net/valleyridge | facebook.com/valleyridges | x.com/ValleyRidgeES

STUDENT INFORMATION

550 Students
94.6% Average daily attendance

STAFF INFORMATION

56.89 Total staff members
11.7 Average number of years teaching experience
8.5 Average number of years teaching in LISD schools

PROFESSIONAL LEARNING

Total number of hours the staff spent developing their job skills last year

3197



43.2

Average professional learning hours per Lewisville ISD staff member



OBSERVATION

173

Number of administrator visits to observe class instruction

87 Average number of classroom visits per administrator

Our Mission at Valley Ridge Elementary

Our mission is to provide a safe, fun, and nurturing foundation that plants the seeds of lifelong learning to develop and empower the next generation of leaders.

Our Core Beliefs

- We create and provide a safe and loving environment.
- Each individual who enters our school feels recognized and valued.
- School is a happy place where we have fun together.
- Risk-taking is a vital part of the learning process.

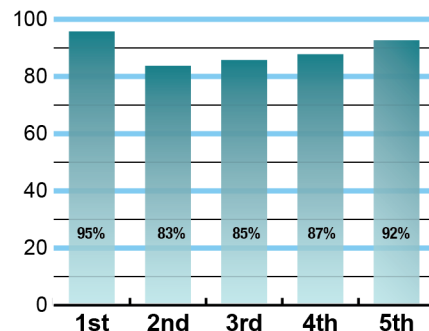
Our motto, "I'm a learner. I'm a leader. Watch me grow!" summarizes our mission and beliefs. Every student has strengths and potential to be a leader in their learning and life. Through teaching students to first be leaders of themselves so that they can then inspire leadership in others around them, we create an environment where students discover their own strengths and leadership potential.



ACADEMIC PERFORMANCE

Istation by grade level

Lewisville ISD monitors students' reading progress through the Istation computer program. Teachers can quickly assess which students need help. This chart shows the percent of students reading on grade level or showing six months growth at the end of the school year.



CLUBS

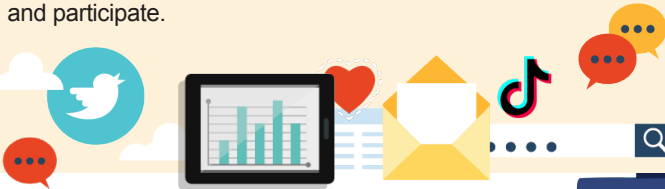
Students engage in learning beyond the classroom by participating in clubs.

Some of our clubs include Jag Leaders, Choir, Art Club, and Robotics Teams.

DIGITAL CITIZENSHIP

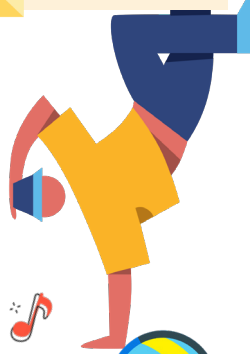


Earning the Common Sense School badge is a symbol of our school's dedication and commitment to helping students think critically and use technology responsibly to learn, create, and participate.



PROGRAMS

Our unique programs help our students grow. These include STEM Academy (K-5), Discovery Academy Full Day PreK, Computer Science specials, Class Habit Huddles, Weekly School-Wide Assembly, Watch D.O.G.S., Mentoring, Functional Life Skills Class, Academic Vocational Life Skills Class, and Extended School Day.



ARTS AND ATHLETICS



100%

Participation in athletics or physical education

100%

Participation in fine arts such as music and art

AWARDS AND RECOGNITIONS

- NISE Nationally Certified STEM School
- CREST Counseling Excellence Award
- Common Sense Digital Learning and Citizenship School Award

Survey said...



What our parents think

In April 2024, parents were surveyed about the campus their child attends. Values represent the percentage of respondents who agreed with each statement. Based on 139 responses.

Are satisfied overall	96%
Most of the time, my child is happy at school	94%
My child's health and wellness are supported	94%
Parents feel welcomed at school and are involved	99%
School staff communicates well with families	89%
Teachers do whatever it takes to help my child meet academic standards	91%

What our students think

In April 2024, we asked 4th and 5th grade students about adults they could confide in at our school. Values represent the percentage of students who agreed with the following.

There is a staff member at my school with whom I feel comfortable talking	83%
---	------------



VALLEY RIDGE ELEMENTARY SCHOOL

Home of the Jaguars
Lewisville, Texas

Lindsey Girlinghouse, Principal

