

Rockbrook Elementary School

Campus Profile

SCHOOL HOURS 7:45 a.m. to 3 p.m. **GRADES** Pre-K through 5th grade
ONLINE lisd.net/rockbrook | facebook.com/rockbrookes | x.com/RockbrookES

STUDENT INFORMATION

595 Students
92.1% Average daily attendance

STAFF INFORMATION

75.23 Total staff members
9.0 Average number of years teaching experience
5.2 Average number of years teaching in LISD schools

PROFESSIONAL LEARNING

Total number of hours the staff spent developing their job skills last year

4693

55.2

Average professional learning hours per Lewisville ISD staff member



OBSERVATION

Number of administrator visits to observe class instruction

267

67 Average number of classroom visits per administrator

At Rockbrook Elementary each day brings opportunity

We succeed with no limits because we believe in our students and value learning.

Every Rockbrook Bear is uniquely capable and deserves to be challenged each day. We provide every student the opportunity to be educated in a way that prepares them for college, careers and life. We believe that meaningful and positive relationships are the foundation of student success.

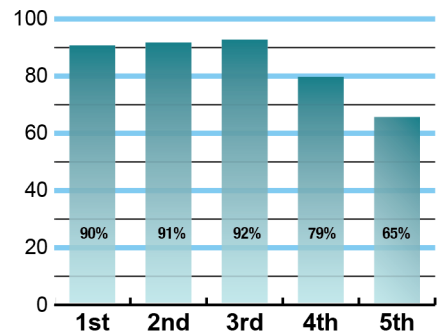
Our students engage in quality instruction that fosters high expectations and honors diversity. We believe in our students' ability to be bold leaders and face challenges with determination and resilience. We are passionate about our students' success and welfare. We work with the families and community to increase connectedness and collaboration for the betterment of our students.



ACADEMIC PERFORMANCE

Istation by grade level

Lewisville ISD monitors students' reading progress through the Istation computer program. Teachers can quickly assess which students need help. This chart shows the percent of students reading on grade level or showing six months growth at the end of the school year.



CLUBS

Clubs provide opportunities for students to engage in learning of their choice beyond the classroom.

Some of our clubs include Choir, Music Memory, and Rockbrook Influencers (Leadership Group).



What our parents think

In April 2024, parents were surveyed about the campus their child attends. Values represent the percentage of respondents who agreed with each statement. Based on 51 responses.

| | |
|------------------------------------------------------------------------|-----|
| Are satisfied overall | 88% |
| Most of the time, my child is happy at school | 92% |
| My child's health and wellness are supported | 92% |
| Parents feel welcomed at school and are involved | 94% |
| School staff communicates well with families | 88% |
| Teachers do whatever it takes to help my child meet academic standards | 90% |

What our students think

In April 2024, we asked 4th and 5th grade students about adults they could confide in at our school. Values represent the percentage of students who agreed with the following.

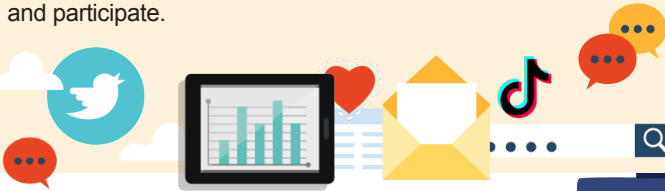
| | |
|---------------------------------------------------------------------------|-----|
| There is a staff member at my school with whom I feel comfortable talking | 83% |
|---------------------------------------------------------------------------|-----|



DIGITAL CITIZENSHIP



Earning the Common Sense School badge is a symbol of our school's dedication and commitment to helping students think critically and use technology responsibly to learn, create, and participate.



PROGRAMS

Our campus offers unique programs to help our students become better learners, leaders, and friends. Ours include partnerships with Vista Ridge United Methodist Church, Denton County Links, Concerned Citizens and African American Parents. We offer Extended School Day, too.



ARTS AND ATHLETICS

100%
Participation in athletics or physical education

100%
Participation in fine arts such as music and art



AWARDS AND RECOGNITIONS

- Common Sense Media School
- CREST Counseling Award

ROCKBROOK ELEMENTARY SCHOOL

Home of the Bears
Lewisville, Texas

Patrick Guy, Principal

