

Mill Street Elementary School

Campus Profile

SCHOOL HOURS 7:45 a.m. to 3 p.m. **GRADES** Pre-K through 5th grade
ONLINE lisd.net/millstreet | facebook.com/millstreetes | x.com/millstreetes

STUDENT INFORMATION

634 Students
94.2% Average daily attendance

STAFF INFORMATION

72.68 Total staff members
11.6 Average number of years teaching experience
8.1 Average number of years teaching in LISD schools

PROFESSIONAL LEARNING

Total number of hours the staff spent developing their job skills last year

4831

56.8

Average professional learning hours per Lewisville ISD staff member



OBSERVATION

Number of administrator visits to observe class instruction

237

79 Average number of classroom visits per administrator

What we believe at Mill Street Elementary

As a Mill Street family, we are committed to building relationships in a learning environment that celebrates diversity and ensures growth for all as we develop as leaders.

Our Mission

Inspiring and engaging every Mustang, every day.

Our Motto

Blazing a Trail to Greatness!

Our Creed

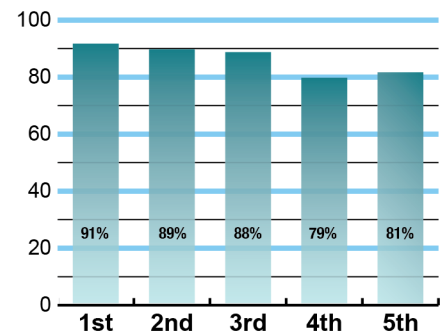
I am strong and courageous.
 I believe in myself.
 I am a leader.
 I am a Mill Street Mustang!



ACADEMIC PERFORMANCE

Istation by grade level

Lewisville ISD monitors students' reading progress through the Istation computer program. Teachers can quickly assess which students need help. This chart shows the percent of students reading on grade level or showing six months growth at the end of the school year.



CLUBS

Students engage in learning of their choice beyond the classroom through monthly clubs for each semester.

Some of our afterschool clubs include Kindness Ambassadors, Student Council, Boys2Men, and Bucket Drums.



What our parents think

In April 2024, parents were surveyed about the campus their child attends. Values represent the percentage of respondents who agreed with each statement. Based on 87 responses.

Are satisfied overall	95%
Most of the time, my child is happy at school	97%
My child's health and wellness are supported	97%
Parents feel welcomed at school and are involved	97%
School staff communicates well with families	90%
Teachers do whatever it takes to help my child meet academic standards	92%

What our students think

In April 2024, we asked 4th and 5th grade students about adults they could confide in at our school. Values represent the percentage of students who agreed with the following.

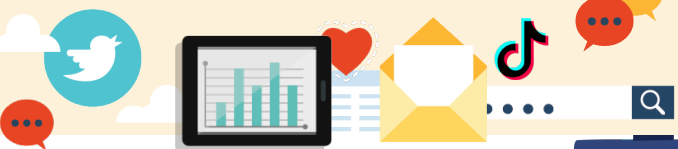
There is a staff member at my school with whom I feel comfortable talking	87%
---	-----



DIGITAL CITIZENSHIP



Earning the Common Sense School badge is a symbol of our school's dedication and commitment to helping students think critically and use technology responsibly to learn, create, and participate.



PROGRAMS

Our campus offers unique programs to help our students grow. Some of ours include Dual Language, Gifted and Talented, Communities in Schools, ACE afterschool, PTA, and schoolwide student leadership roles. We offer Extended School Day, too.



ARTS AND ATHLETICS



100%
Participation in athletics or physical education

100%
Participation in fine arts such as music and art

AWARDS AND RECOGNITIONS

- LISD Nurse of the Year Finalist, Steffanie Elmer 2023-2024
- LEF Grant for Collaborative Station (Art and Music integration)
- LEF Grant for Milling Around Makerspace in Library
- Teacher of the Year Finalist 2020-2021, Dierdre Tinker, STREAM Teacher
- Received \$5,000 from LEF for the purchase of Spanish literacy books
- Received \$2,000 from LEF for Spanish books for the school library
- Common Sense recognized school

MILL STREET ELEMENTARY SCHOOL

Home of the Mustangs
Lewisville, Texas

Deborah Bailey, Principal

