

Lewisville High School

Campus Profile

SCHOOL HOURS ONLINE

8:20 a.m. - 3:35 p.m. **GRADES** 11th and 12th

lisd.net/lhs | facebook.com/lewisvillehs | twitter.com/lewisvillehs

STUDENT INFORMATION

2027	Students
93.2%	Average daily attendance

STAFF INFORMATION

197.84	Total staff members
12.6	Average number of years teaching experience
8.5	Average number of years teaching in LISD schools

PROFESSIONAL LEARNING

Total number of hours the staff spent developing their job skills last year

10,994

Average professional learning hours per Lewisville ISD staff member



OBSERVATION

Number of administrator visits to observe class instruction

685

98 Average number of classroom visits per administrator

At Lewisville High School, we:

- Demonstrate kindness and courtesy through our words and actions
- Give our best effort every day in and out of class
- Take ownership of our learning journey
- Help students stretch beyond their comfort zone to take risks in their learning, socialize safely, see value in a struggle or failure, set and reset goals and have a plan for their future
- Have rules and regulations, but there will always be time to talk, discuss and address concerns and find common ground on issues that arise

Above all, we provide a top-level education so students can compete with any young adult in the world. Fighting Farmers will be prepared for a productive life in a future they create. Lewisville High School is built on tradition, united in spirit and driven by pride.

COLLEGE READINESS

Average combined scores for 2023 college entrance exams

938 | **18.1**
SAT | ACT

Enrolled in Honors/AP or dual credit courses **31%**

GRADUATION RATE

Percent of graduates from the class of 2023

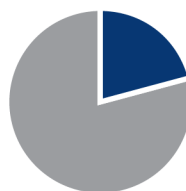
94.2%



Percent of students whose test scores indicate they are college and career ready.



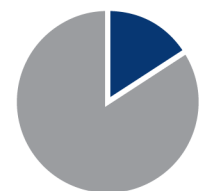
SAT Reading/Writing
48%



SAT Math
21%



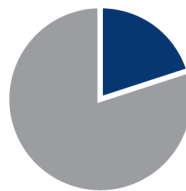
ACT English Comp
45%



ACT Algebra
16%



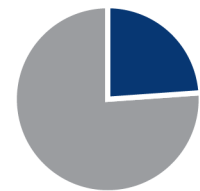
ACT Social Science
31%



ACT Biology
20%



PSAT/NMSQT
Reading/Writing
52.8%



PSAT/NMSQT
Math
23.9%



What our students say . . .

In April 2023, seniors were asked about their experiences in the district, future readiness and post-graduation plans.

I plan to go to college	72.9%
I will join the military or attend a service academy	2.4%
I plan to work full time	19.9%
I will attend technical or trade school	8.2%
I plan to attain industry certification	3.1%
I feel I am well-prepared for the future	77.2%
Overall, I am satisfied with my LISD education	91.0%

What do our parents think?

In April 2023, parents were surveyed about the campus their child attends. Values represent the percentage of respondents who agree. Based on 132 responses.

Are satisfied overall	93.1%
I can reach out to staff to discuss my concerns	93.0%
My child feels they can go to staff for help	91.5%
My child feels that school work is important	84.5%
My child feels safe at school	92.2%
Most of the time, my child is happy at school	89.6%
School staff values my child's culture and needs	83.9%
My child's mental health and wellness are supported	89.8%
I am informed about my child's progress and grades	96.9%
Parents feel welcomed at school and are involved	91.9%
Teachers do well to help students who fall behind	91.4%
School staff communicates well with families	90.6%
School staff cares about my child	90.8%
School staff encourages my child to do their best	93.0%
I am satisfied with the school's health protocols	96.1%
I am satisfied with the school's safety protocols	93.7%

PROGRAMS

Our campus offers unique programs to help our students become better learners, leaders, and friends.

- Real Estate Program
- Dual Credit
- Firefighter Program
- Farmers Harvest News
- Character Strong
- INCubatoredu
- Marketing Program
- AVID
- NJROTC
- Block Lunch

FINE ARTS AND ATHLETICS

31% Participate in athletics or PE

35% Participate in the arts

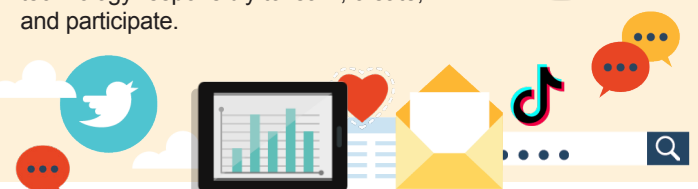
CLUBS

Clubs provide opportunities for students to engage in learning of their choice beyond the classroom.

Some of ours include Student Council, President's Club, Interact Club, Circle of Friends, Junior World Affairs Council, German Club, Junior Class Council, Art Club, Latino Club, Chin Club, Mu Alpha Theta, Fashion Club, Spanish Club, HOSA, DECA, Robotics, and Bowling.

DIGITAL CITIZENSHIP

Earning the Common Sense School badge is a symbol of our school's dedication and commitment to helping students think critically and use technology responsibly to learn, create, and participate.



OTHER AWARDS AND RECOGNITIONS

- One-Act Play State Champion
- State and National Champion Cheer Program
- District Teacher of the Year
- Softball State Champions
- National Council of English Teachers of Excellence
- Numerous Speech and Debate State and National Winners
- LISD First-year Teacher of the Year
- ROTC - Distinguished Unit Award
- Drumline Area Champions
- Quest-Bridge Student Scholarship Recipient

LEWISVILLE HIGH SCHOOL

Home of the Farmers, Lewisville, Texas

Jim Baker, Principal

