

Ethridge Elementary School

Campus Profile

SCHOOL HOURS 7:45 a.m. to 3 p.m. **GRADES** Kindergarten through 5th grade
ONLINE lisd.net/ethridge | facebook.com/EthridgeES | x.com/EthridgeES

STUDENT INFORMATION

342 Students
94.1% Average daily attendance

STAFF INFORMATION

40.97 Total staff members
13.0 Average number of years teaching experience
9.8 Average number of years teaching in LISD schools

PROFESSIONAL LEARNING

Total number of hours the staff spent developing their job skills last year

2423

51.6

Average professional learning hours per Lewisville ISD staff member



OBSERVATION

329

Number of administrator visits to observe class instruction

165 Average number of classroom visits per administrator

At Ethridge Elementary, we believe:

Excellence is the expectation. Teachers, parents, and our community work together in developing students who are creative thinkers, innovative problem solvers, and future leaders with a love of learning and a strong sense of independence and purpose.

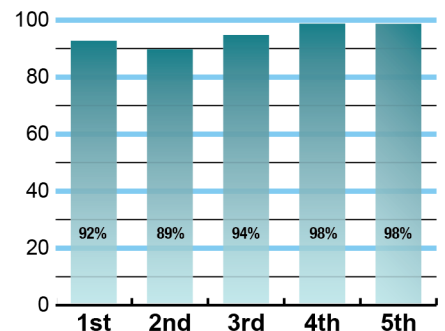
We believe:

- Every student is uniquely capable and deserves to be challenged each day
- Creative thinkers, problem solvers and future leaders are built by design and intentionality
- Independent, self-motivated learners have a strong sense of purpose and connectedness
- Fostering character development is vital to raising children who care about and for others
- A safe, nurturing, inclusive and flexible environment is key to growing our students intellectually, socially and emotionally
- An educated citizenry is essential for equal opportunity and a prosperous society
- Meaningful and relevant work, combined with powerful instruction, engages students in profound learning
- Critical thinking and problem solving today are necessary for students to be equipped for future challenges
- Education is the shared responsibility of the community

ACADEMIC PERFORMANCE

Istation by grade level

Lewisville ISD monitors students' reading progress through the Istation computer program. Teachers can quickly assess which students need help. This chart shows the percent of students reading on grade level or showing six months growth at the end of the school year.



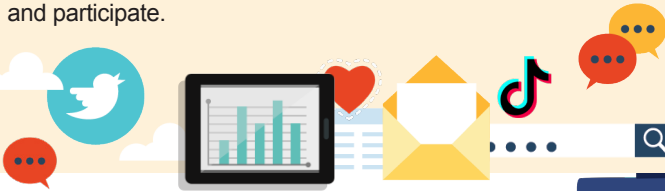
CLUBS

Students engage in learning and leadership development in areas of their choice beyond the classroom through clubs. At Ethridge, students can select from the following clubs or organizations: Running Club, Art Club, Choir, Book Club, Eagle Safety patrol, Eagle Flag Corps, Student Council, and then specialty parent pay clubs that vary each year such as Dance, Coding Club or Cheer.

DIGITAL CITIZENSHIP

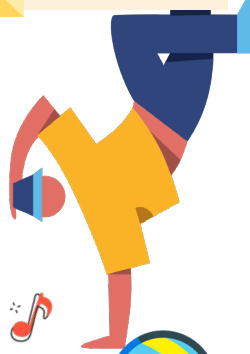


Earning the Common Sense School badge is a symbol of our school's dedication and commitment to helping students think critically and use technology responsibly to learn, create, and participate.



PROGRAMS

Our programs include Extended School Day, Chicken Tenders, STEM/ MakerSpace, Ethridge Essentials of Learning, Communication, and Character (6 Pillars from Character Counts), Safe and Civil Schools, Restorative Practices and Kindness Confetti.



ARTS AND ATHLETICS



100%

Participation in athletics or physical education

100%

Participation in fine arts such as music and art

AWARDS AND RECOGNITIONS

- Yearly teacher LEF Grant recipients and 2022-23 Campus Grant

Survey said...



What our parents think

In April 2024, parents were surveyed about the campus their child attends. Values represent the percentage of respondents who agreed with each statement. Based on 77 responses.

Are satisfied overall	97%
Most of the time, my child is happy at school	97%
My child's health and wellness are supported	99%
Parents feel welcomed at school and are involved	99%
School staff communicates well with families	94%
Teachers do whatever it takes to help my child meet academic standards	95%

What our students think

In April 2024, we asked 4th and 5th grade students about adults they could confide in at our school. Values represent the percentage of students who agreed with the following.

There is a staff member at my school with whom I feel comfortable talking	91%
---	-----



ETHRIDGE ELEMENTARY SCHOOL

Home of the Eagles
The Colony, Texas

Tasia Thompson, Principal

