



Donald Elementary School STEM Campus Profile

SCHOOL HOURS ONLINE

7:45 a.m. to 3:25 p.m. **GRADES** Kindergarten through 5th grade
lisd.net/donald | facebook.com/donaldelementary | x.com/Donald_ES

STUDENT INFORMATION

575 Students
94.7% Average daily attendance

STAFF INFORMATION

62.46 Total staff members
11.7 Average number of years teaching experience
9.3 Average number of years teaching in LISD schools

PROFESSIONAL LEARNING

Total number of hours the staff spent developing their job skills last year

3827

53.2

Average professional learning hours per Lewisville ISD staff member



OBSERVATION

Number of administrator visits to observe class instruction

139

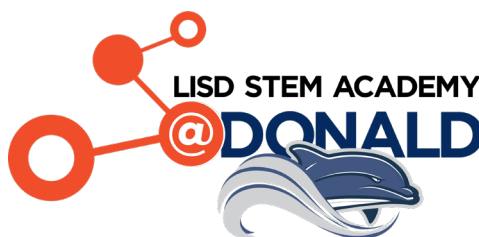
70 Average number of classroom visits per administrator

Our vision

At the STEM Academy @ Donald Elementary, our vision is to provide the opportunities and support necessary to help our Dolphins become fearless problem-solvers who choose to face challenges with an open mind and a kind heart. As a community, we are committed to nurturing lifelong, creative, and collaborative learners who strive to make a positive impact on our global society.

Since becoming the first NISE nationally certified campus for STEM Excellence in the state of Texas, the Donald community has intentionally focused on providing our learners with opportunities that not only challenge them to grow academically, but to grow socially and emotionally as well.

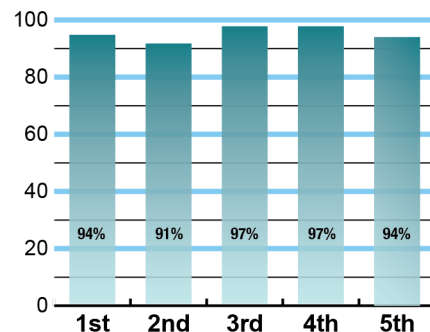
We embrace the critical role STEM plays in our future, and we understand preparing students for future STEM careers extends beyond mastering science, technology, engineering, and math skills. We seek to grow empathetic, self-aware, future-ready leaders who understand working with others is the key to making a positive impact in our world!



ACADEMIC PERFORMANCE

Istation by grade level

Lewisville ISD monitors students' reading progress through the Istation computer program. Teachers can quickly assess which students need help. This chart shows the percent of students reading on grade level or showing six months growth at the end of the school year.

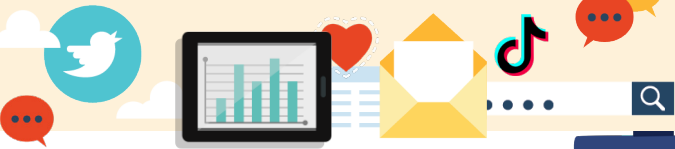


CLUBS

4th and 5th Grade students at Donald can participate in campus leadership activities including Student Council, KKIDS News, and Safety Patrol. Students in 3rd through 5th grade are encouraged to stay active through the Run Club and Jump Rope Team, and 4th and 5th grade students have the opportunity to audition for Choir and Drumming programs each year.

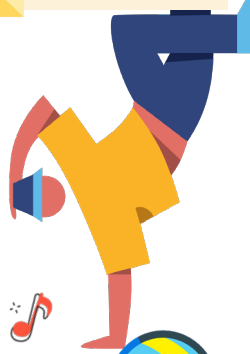
DIGITAL CITIZENSHIP

Earning the Common Sense School badge is a symbol of our school's dedication and commitment to helping students think critically and use technology responsibly to learn, create, and participate.



PROGRAMS

At Donald, all students participate in STEM instruction daily to support their growth as problem solvers and collaborators. Students participate in Physical Education, Music, Art, and Computer Science weekly, and additional creative and collaborative learning opportunities are provided through Designing Dolphins.



ARTS AND ATHLETICS

100%
Participation in athletics or physical education

100%
Participation in fine arts such as music and art



AWARDS AND RECOGNITIONS

- First Nationally Certified School for STEM Excellence in Texas
- NISE Certified 2018 and Recertified 2023
- Common Sense Media Certified Campus
- ASCA School of Excellence Award
- TEPSA Student Council Honor Award

Survey said...



What our parents think

In April 2024, parents were surveyed about the campus their child attends. Values represent the percentage of respondents who agreed with each statement. Based on 186 responses.

Are satisfied overall	91%
Most of the time, my child is happy at school	94%
My child's health and wellness are supported	92%
Parents feel welcomed at school and are involved	92%
School staff communicates well with families	92%
Teachers do whatever it takes to help my child meet academic standards	90%

What our students think

In April 2024, we asked 4th and 5th grade students about adults they could confide in at our school. Values represent the percentage of students who agreed with the following.

There is a staff member at my school with whom I feel comfortable talking	84%
---	-----



DONALD ELEMENTARY STEM ACADEMY

Home of the Dolphins
Flower Mound, Texas

Heather Shorter, Principal

