

Degan Elementary School

Campus Profile

SCHOOL HOURS 7:45 a.m. to 3 p.m. **GRADES** Pre-K through 5th grade
ONLINE lisd.net/degan | facebook.com/deganes | x.com/DeganElementary

STUDENT INFORMATION

403 Students
94.2% Average daily attendance

STAFF INFORMATION

53.18 Total staff members
14.0 Average number of years teaching experience
9.1 Average number of years teaching in LISD schools

PROFESSIONAL LEARNING

Total number of hours the staff spent developing their job skills last year

3044

50.7

Average professional learning hours per Lewisville ISD staff member



OBSERVATION

Number of administrator visits to observe class instruction

344

172 Average number of classroom visits per administrator

At Degan Elementary we believe:

Relationships are a priority and we will design learning experiences for our students while continuing to consider their social-emotional needs.

- All students can learn and be proficient and advanced in core academic areas.
- Everyone who walks through our doors is valuable and is an important contributor to our learning environments.
- Partnering with our families and communities is critical to providing the best quality education for our students as we grow as a learning organization.

Degan students will become intrinsically motivated learners who are confident, respectful citizens valuing education, themselves, and others. The faculty and staff of Degan will collaborate to engage students in profound learning and empower them to become lifelong learners who make a positive impact in the community. We provide meaningful learning with relevant feedback to help our students know where they are and how they can consistently improve.

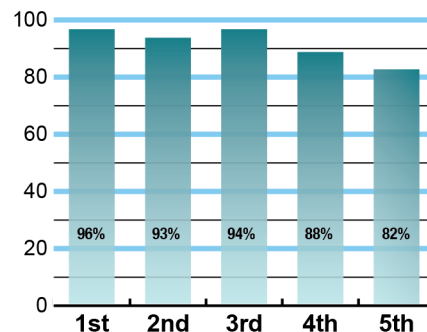
We want to ensure our students have the skills and mindset to face their future with confidence and take risks to add value to our community and the world.

Follow us at [#WeAreDegan!](https://twitter.com/WeAreDegan)

ACADEMIC PERFORMANCE

Istation by grade level

Lewisville ISD monitors students' reading progress through the Istation computer program. Teachers can quickly assess which students need help. This chart shows the percent of students reading on grade level or showing six months growth at the end of the school year.



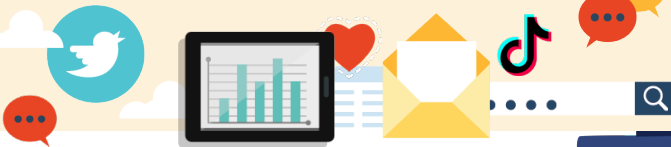
CLUBS

Learning outside the classroom happens through our student interest clubs. Some of these include Student Council, Kindness, Choir, Walk About, Maker space, Sports, Art, Eagle News Network, Breakfast Club, Robotics, Breakout Club, and Sports and Games Club.

DIGITAL CITIZENSHIP

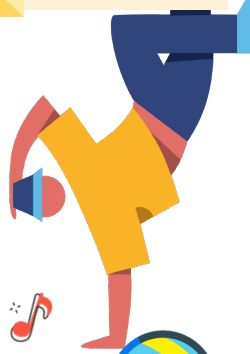


Earning the Common Sense School badge is a symbol of our school's dedication and commitment to helping students think critically and use technology responsibly to learn, create, and participate.



PROGRAMS

Our campus offers unique programs to help our students become better learners, leaders, and friends. Some of our programs include No Excuses University, Club Friday, and Eagle Shuffle. We offer Extended School Day, too.



ARTS AND ATHLETICS



100%
Participation in athletics or physical education

100%
Participation in fine arts such as music and art

AWARDS AND RECOGNITIONS

- Excellence in Professional Learning
- Lewisville Area Chamber of Commerce Educator of the Year, School of the Month, Teacher of the Month and Student of the Month
- National Model Professional Learning Campus
- Energy Star Award
- National Distinguished Principal Finalist (top five in Texas)
- Texas Principal's Institute Transforming Learning School
- No Excuses University Campus
- PTA Early Bird Award
- PTA Snappy Increase Award
- PTA Comeback Head Start Award
- PTA Shining Star Award

Survey said...



What our parents think

In April 2024, parents were surveyed about the campus their child attends. Values represent the percentage of respondents who agreed with each statement. Based on 62 responses.

Are satisfied overall	89%
Most of the time, my child is happy at school	89%
My child's health and wellness are supported	92%
Parents feel welcomed at school and are involved	95%
School staff communicates well with families	82%
Teachers do whatever it takes to help my child meet academic standards	90%

What our students think

In April 2024, we asked 4th and 5th grade students about adults they could confide in at our school. Values represent the percentage of students who agreed with the following.

There is a staff member at my school with whom I feel comfortable talking	86%
---	-----



DEGAN ELEMENTARY SCHOOL

Home of the Eagles
Lewisville, Texas

LaShundra Wilson, Principal

