

Creekside Elementary School Campus Profile

SCHOOL HOURS 7:45 a.m. to 3 p.m. **GRADES** Kindergarten through 5th grade
ONLINE lisd.net/creekside | facebook.com/creeksidecubs | x.com/CreeksideCubs

STUDENT INFORMATION

393 Students
94.7% Average daily attendance

STAFF INFORMATION

50.45 Total staff members
13.5 Average number of years teaching experience
10.0 Average number of years teaching in LISD schools

PROFESSIONAL LEARNING

Total number of hours the staff spent developing their job skills last year

2722

48.6

Average professional learning hours per Lewisville ISD staff member



OBSERVATION

Number of administrator visits to observe class instruction

284

142 Average number of classroom visits per administrator

At Creekside Elementary, we believe that:

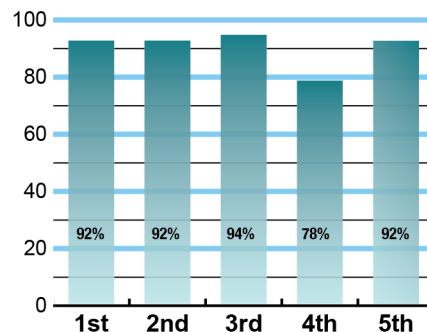
- Every child deserves to be educated in a way that prepares them for college if they choose
- Self-discipline is developed through the philosophy of love and logic
- Students should begin to set personal academic goals, track them, and achieve them
- Resilience is explicitly taught through our campus culture of failing forward, accepting all setbacks as opportunities
- Self-awareness and appreciation of others is fostered for all students
- Collaboration, determination and critical thinking are applied beyond the written curriculum through various clubs and community activities

Regardless of how the world or curriculum will change between today and when our students graduate, we believe these are the timeless skills that will make every Creekside Cub a success in the future they create.

ACADEMIC PERFORMANCE

Istation by grade level

Lewisville ISD monitors students' reading progress through the Istation computer program. Teachers can quickly assess which students need help. This chart shows the percent of students reading on grade level or showing six months growth at the end of the school year.



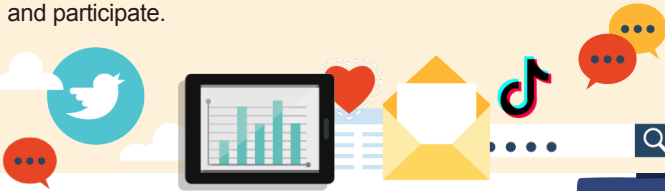
CLUBS

Students engage in learning of their choice beyond the classroom through clubs. Ours include Art Club, Choir, Honor Choir, Book Club, C.O.L.A. Club, Chess Club, Robotics, Media Team, Basketball Club, C.U.B.S. Club, Student Council, Boys-2-Men and Grow Girls.

DIGITAL CITIZENSHIP



Earning the Common Sense School badge is a symbol of our school's dedication and commitment to helping students think critically and use technology responsibly to learn, create, and participate.



PROGRAMS

Our campus offers unique programs to help our students become better learners, leaders, and friends. Some of ours include Two-way Dual Language, Watch D.O.G.S., Safe & Civil Schools, Love & Logic, Adult ESL Classes, and Cub Academy. We offer Extended School Day, too.



ARTS AND ATHLETICS



100%

Participation in athletics or physical education

100%

Participation in fine arts such as music and art

AWARDS AND RECOGNITIONS

- Common Sense Media School
- Chamber of Commerce Teacher of the Month
- LEF Grant recipients
- ENERGY STAR certified school

Survey said...



What our parents think

In April 2024, parents were surveyed about the campus their child attends. Values represent the percentage of respondents who agreed with each statement. Based on 74 responses.

Are satisfied overall	99%
Most of the time, my child is happy at school	96%
My child's health and wellness are supported	99%
Parents feel welcomed at school and are involved	97%
School staff communicates well with families	97%
Teachers do whatever it takes to help my child meet academic standards	99%

What our students think

In April 2024, we asked 4th and 5th grade students about adults they could confide in at our school. Values represent the percentage of students who agreed with the following.

There is a staff member at my school with whom I feel comfortable talking	94%
---	-----



CREEKSIDE ELEMENTARY SCHOOL

Home of the Cubs
Lewisville, Texas

Rod McGinnis, Principal

