

Central Elementary School Campus Profile

SCHOOL HOURS 7:45 a.m. to 3 p.m. **GRADES** Pre-K through 5th grade
ONLINE lisd.net/central | facebook.com/centralelem | x.com/Central_ES

STUDENT INFORMATION

542 Students
94.1% Average daily attendance

STAFF INFORMATION

68.48 Total staff members
11.7 Average number of years teaching experience
7.8 Average number of years teaching in LISD schools

PROFESSIONAL LEARNING

Total number of hours the staff spent developing their job skills last year

4870

55.3

Average professional learning hours per Lewisville ISD staff member

389

OBSERVATION

Number of administrator visits to observe class instruction

130 Average number of classroom visits per administrator

At Central Elementary, we believe:

- Students' needs are the center of our learning community.
- Education is the shared responsibility of students, staff, and community.
- High quality staff are the heart of a culture of learning.
- A safe and nurturing environment is essential for a sense of well-being.
- Continuous improvement informs and inspires future growth.
- Students are more than a test score.

Central Pledge: Today, I will do more than I have to do. I will treat others as I want to be treated and I will become a better person.

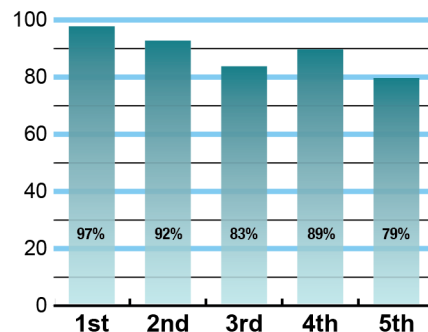
Promesa de la Central: Hoy, haré todo lo que esté a mi alcance. Yo trataré a otros como quiero ser tratado y me convertiré en una mejor persona.



ACADEMIC PERFORMANCE

Istation by grade level

Lewisville ISD monitors students' reading progress through the Istation computer program. Teachers can quickly assess which students need help. This chart shows the percent of students reading on grade level or showing six months growth at the end of the school year.



CLUBS

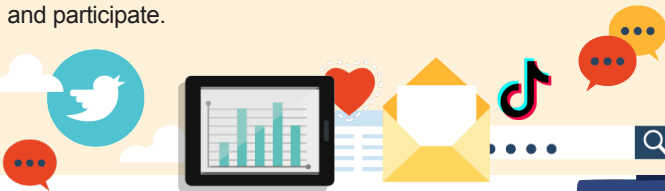
Clubs provide opportunities for students to engage in learning of their choice beyond the classroom.

Some of our clubs include Chess Club, Robotics, Rubik's Cube Club, Choir, Folklorico Dance Club, House Leaders, STEM Club, Reading Club, and Lego Club.

DIGITAL CITIZENSHIP

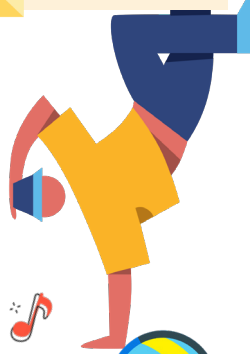


Earning the Common Sense School badge is a symbol of our school's dedication and commitment to helping students think critically and use technology responsibly to learn, create, and participate.



PROGRAMS

Our programs include Communities in Schools, Dual Language, English as a Second Language, Breakfast in the Classroom, Gifted/Talented, Kindness Ambassadors, Full Day Pre-K, Safe and Civil Schools, ACE, and the Central House System to encourage leadership. We also offer Extended School Day.



ARTS AND ATHLETICS



100%

Participation in athletics or physical education

100%

Participation in fine arts such as music and art

AWARDS AND RECOGNITIONS

- 2020-2021 Lewisville Chamber of Commerce School of the Month
- 2023-2024 Choir Sweepstakes Winner
- 2023-2024 Delta Kappa Gamma Writing Society Recognition
- 2023-2024 PTA Apple Award
- 2023-2024 PTA Membership Increase Award
- Dance Club performed at Hispanic Heritage Celebration at Bell Helicopter
- LEF Grant Recipient

Survey said...



What our parents think

In April 2024, parents were surveyed about the campus their child attends. Values represent the percentage of respondents who agreed with each statement. Based on 68 responses.

Are satisfied overall	96%
Most of the time, my child is happy at school	97%
My child's health and wellness are supported	100%
Parents feel welcomed at school and are involved	100%
School staff communicates well with families	93%
Teachers do whatever it takes to help my child meet academic standards	94%

What our students think

In April 2024, we asked 4th and 5th grade students about adults they could confide in at our school. Values represent the percentage of students who agreed with the following.

There is a staff member at my school with whom I feel comfortable talking	82%
---	------------



CENTRAL ELEMENTARY SCHOOL

Home of the Cowboys
Lewisville, Texas

Shaunna Buck, Principal

