



Bridlewood Elementary School

STEM Campus Profile

SCHOOL HOURS 7:45 a.m. to 3:25 p.m. **GRADES** Kindergarten through 5th grade
ONLINE lisd.net/bridlewood | facebook.com/bridlewoodes | x.com/bridlewoodes

STUDENT INFORMATION

589 Students
95.0% Average daily attendance

STAFF INFORMATION

52.08 Total staff members
14.3 Average number of years teaching experience
10.0 Average number of years teaching in LISD schools

PROFESSIONAL LEARNING

Total number of hours the staff spent developing their job skills last year

2833

49.7

Average professional learning hours per Lewisville ISD staff member



OBSERVATION

Number of administrator visits to observe class instruction

197

99 Average number of classroom visits per administrator

What we believe

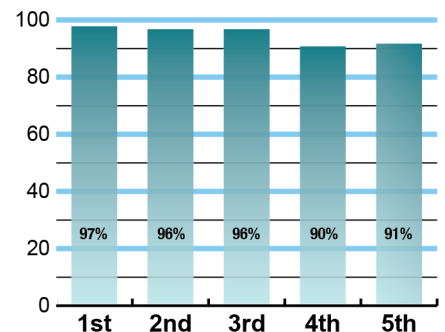
Bridlewood Elementary is focused on building relationships and providing a world class education and experience for all of our Bronco learners! When you walk through the doors at Bridlewood, you can instantly feel and see the safe, fun, friendly, and family filled environment that makes our campus culture special! Our talented staff, engaging STEM curriculum, beautiful outdoor classroom, and award winning PTA add to the overall unique experience of being a Bridlewood Bronco! Our students are encouraged to problem solve and collaborate with real world issues so they are prepared for a future they create!



ACADEMIC PERFORMANCE

Istation by grade level

Lewisville ISD monitors students' reading progress through the Istation computer program. Teachers can quickly assess which students need help. This chart shows the percent of students reading on grade level or showing six months growth at the end of the school year.

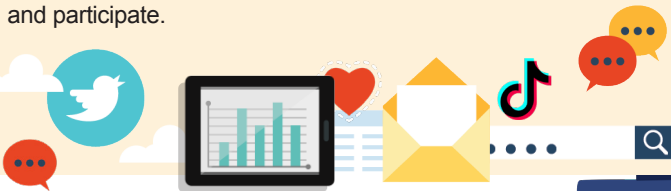


CLUBS

Every Bronco student participates in grade level clubs twice a month. Students choose activities like LEGO club, cooking club, sports club, yoga club, running club, crafting club, drawing club, and many more! Students can participate in Student Council, Safety Patrol, Encore, Bridlewood Choir, LISD Honor Choir, and Coding and Robotics team for 4th and 5th grade students.

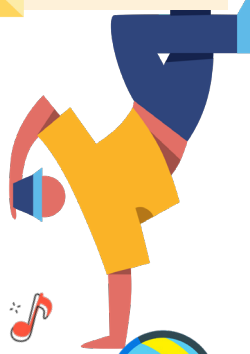
DIGITAL CITIZENSHIP

Earning the Common Sense School badge is a symbol of our school's dedication and commitment to helping students think critically and use technology responsibly to learn, create, and participate.



PROGRAMS

Students can participate in music performances, computer science, and STEM curriculum with engineering. All students participate in character trait and social emotional learning. Community programs include PTA, and Watch D.O.G. Dad program. We offer Extended School Day, too.



ARTS AND ATHLETICS



100%
Participation in athletics or physical education

100%
Participation in fine arts such as music and art

AWARDS AND RECOGNITIONS

- Nationally Certified STEM Campus
- LISD Teacher of the year finalist two years
- Chamber of Commerce School of the month multiple times
- Common Sense Media Certified School

Survey said...



What our parents think

In April 2024, parents were surveyed about the campus their child attends. Values represent the percentage of respondents who agreed with each statement. Based on 231 responses.

Are satisfied overall	93%
Most of the time, my child is happy at school	93%
My child's health and wellness are supported	95%
Parents feel welcomed at school and are involved	94%
School staff communicates well with families	95%
Teachers do whatever it takes to help my child meet academic standards	92%

What our students think

In April 2024, we asked 4th and 5th grade students about adults they could confide in at our school. Values represent the percentage of students who agreed with the following.

There is a staff member at my school with whom I feel comfortable talking	92%
---	-----



BRIDLEWOOD ELEMENTARY SCHOOL

Home of the Broncos
Flower Mound, Texas

Meredith Whitehouse, Principal

