

Briarhill Middle School

Campus Profile

SCHOOL HOURS 8:55 a.m. to 4:10 p.m. **GRADES** 6th through 8th grade
ONLINE lisd.net/briarhill | facebook.com/briarhillms | x.com/BMSBulldogs

STUDENT INFORMATION

794 Students
95.1% Average daily attendance

STAFF INFORMATION

72.93 Total staff members
13.5 Average number of years teaching experience
10.4 Average number of years teaching in LISD schools

PROFESSIONAL LEARNING

Total number of hours the staff spent developing their job skills last year

3896

45.3

Average professional learning hours per Lewisville ISD staff member



OBSERVATION

Number of administrator visits to observe class instruction

182

61 Average number of classroom visits per administrator

At Briarhill Middle School, we believe:

- All students can be productive and informed citizens
- Students should be provided with challenging, real-world learning experiences
- Opportunities for risk-taking are a vital part of the learning process

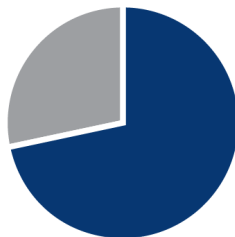
Our mission is to teach students to become informed, engaged citizens, and curious lifelong learners. All students have opportunities to engage in challenging, real-world learning experiences through field trips, hands on experiences and guest speakers from our community. We are dedicated to providing a safe environment in which our students are inspired to reach their full potential and create a positive legacy for the future.



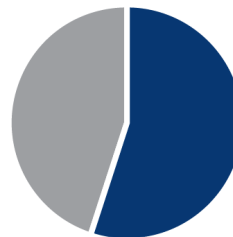
ACADEMIC PERFORMANCE

PSAT SCORES AND ADVANCED COURSES

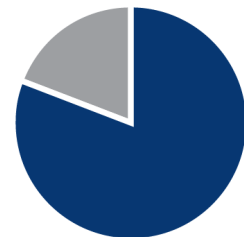
- = Percent of students whose PSAT test scores indicate they are college and career ready.
- = Percent of student population who are enrolled in at least one advanced course.



PSAT Reading **71.9%**



PSAT Math **55.1%**



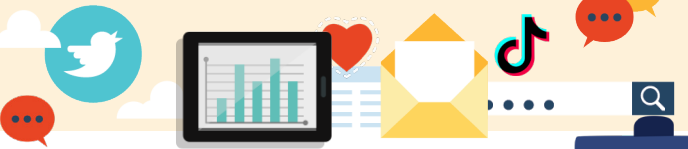
Honors/AP enrolled **81%**

CLUBS

Clubs allow students to learn beyond the classroom. Some of our clubs include Chess Club, Craft Club, BeYoutiful Clud, Kindness Club, Fellowship of Christian Athletes, Trebellas, Acafellas, STEAM Club, Circle of Friends, Photography Club, Bulldog Blast, Art Club, NJHS, and Student Council.

DIGITAL CITIZENSHIP

Earning the Common Sense School badge is a symbol of our school's dedication and commitment to helping students think critically and use technology responsibly to learn, create, and participate.



PROGRAMS

Our campus offers unique programs to help our students grow. Some of these include Lunch and Learns, Samsung Solve for Tomorrow, World Tour, Lonestar Challenge, Cultural Festivals, Career Day, Red Ribbon Week, Archery, and Robotics.



ARTS AND ATHLETICS



100%
Participation in athletics or physical education

81%
Participation in fine arts such as music and art

AWARDS AND RECOGNITIONS

- HEB Teacher of the Year
- TCEA Library Media Specialist of the year
- Samsung Grant Recipient State Winner
- ENERGY STAR certified school
- District and Regional Winner Teacher of the Year
- FM Chamber Students of the Month
- Hosted ISS Downlink with guests from NASA, local and state dignitaries including Texas Governor Greg Abbott
- LISD Assistant Principal of the Year
- Multiple district and LEF grant winners
- Award winning PTA

Survey said...



What our parents think

In April 2024, parents were surveyed about the campus their child attends. Values represent the percentage of respondents who agreed with each statement. Based on 242 responses.

Are satisfied overall	92%
Most of the time, my child is happy at school	92%
My child's health and wellness are supported	90%
Parents feel welcomed at school and are involved	90%
School staff communicates well with families	93%
Teachers do whatever it takes to help my child meet academic standards	93%

What our students think

In April 2024, we asked our students about adults they could confide in at our school. Values represent the percentage of students who agreed with the following.

There is a staff member at my school with whom I feel comfortable talking	84%
---	-----



BRIARHILL MIDDLE SCHOOL

Home of the Bulldogs
Flower Mound, Texas

Dr. Tina Krol, Principal

