

Bluebonnet Elementary School

Campus Profile

SCHOOL HOURS 7:45 a.m. to 3 p.m. **GRADES** Kindergarten through 5th grade
ONLINE lisd.net/bluebonnet | facebook.com/bluebonnetes | x.com/BluebonnetES

STUDENT INFORMATION

672 Students
95.6% Average daily attendance

STAFF INFORMATION

51.56 Total staff members
14.0 Average number of years teaching experience
10.3 Average number of years teaching in LISD schools

PROFESSIONAL LEARNING

Total number of hours the staff spent developing their job skills last year

3188

55

Average professional learning hours per Lewisville ISD staff member

224

OBSERVATION

Number of administrator visits to observe class instruction

112 Average number of classroom visits per administrator

At Bluebonnet Elementary, we believe:

- Students have the opportunity to excel to their highest potential
- Students are given opportunities to be risk-takers and creative thinkers
- Students will embrace real-life experiences on their journey to becoming lifelong learners

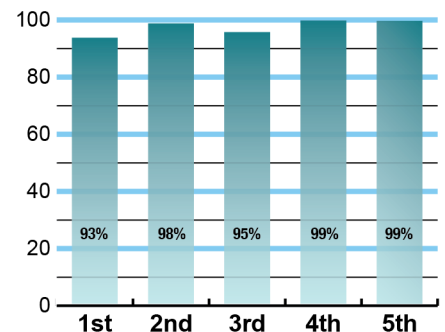
We are devoted to providing every student with the academic and social skills to be successful throughout their life. Our partnership with our families, staff and community is vital to the academic and social success of our students.



ACADEMIC PERFORMANCE

Istation by grade level

Lewisville ISD monitors students' reading progress through the Istation computer program. Teachers can quickly assess which students need help. This chart shows the percent of students reading on grade level or showing six months growth at the end of the school year.



CLUBS

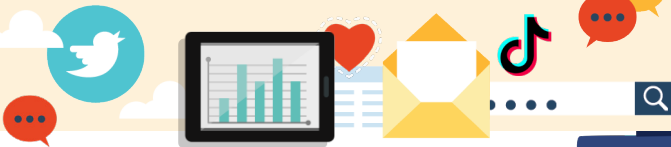
Students engage in learning of their choice beyond the classroom through clubs.

Some of our clubs include Bear Patrol, KPAW, Running Club, and Show Choir.

DIGITAL CITIZENSHIP



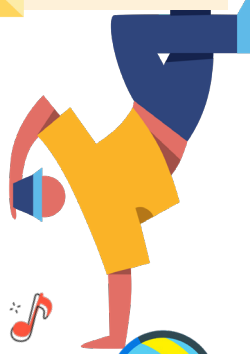
Earning the Common Sense School badge is a symbol of our school's dedication and commitment to helping students think critically and use technology responsibly to learn, create, and participate.



PROGRAMS

Our campus offers unique programs to help our students become better learners, leaders, and friends.

Some of our programs include Kid with Character and Restorative Practices. We offer Extended School Day, too.



ARTS AND ATHLETICS



100%

Participation in athletics or physical education

100%

Participation in fine arts such as music and art

AWARDS AND RECOGNITIONS

- 2023 Best of Denton County for Best Public Elementary School
- National PTA School of Excellence
- Town of Flower Mound Chamber of Commerce School of the Month May 2021
- PTA Golden Apple Award
- Common Sense Certified School

Survey said...



What our parents think

In April 2024, parents were surveyed about the campus their child attends. Values represent the percentage of respondents who agreed with each statement. Based on 196 responses.

Are satisfied overall	96%
Most of the time, my child is happy at school	97%
My child's health and wellness are supported	96%
Parents feel welcomed at school and are involved	97%
School staff communicates well with families	97%
Teachers do whatever it takes to help my child meet academic standards	94%

What our students think

In April 2024, we asked 4th and 5th grade students about adults they could confide in at our school. Values represent the percentage of students who agreed with the following.

There is a staff member at my school with whom I feel comfortable talking	91%
---	-----



BLUEBONNET ELEMENTARY SCHOOL

Home of the Bears
Flower Mound, Texas

Lana D. Fisher, Principal

