

B. B. Owen Elementary School

Campus Profile

SCHOOL HOURS 7:45 a.m. to 3 p.m. **GRADES** Pre-K through 5th grade
ONLINE lisd.net/bbowen | facebook.com/bbowenes | x.com/bbowenes

STUDENT INFORMATION

265 Students
94.6% Average daily attendance

STAFF INFORMATION

41.78 Total staff members
11.6 Average number of years teaching experience
9.6 Average number of years teaching in LISD schools

PROFESSIONAL LEARNING

Total number of hours the staff spent developing their job skills last year

2872

59.8

Average professional learning hours per Lewisville ISD staff member



OBSERVATION

147

Number of administrator visits to observe class instruction

74 Average number of classroom visits per administrator

What we believe

- Each child is capable of learning and becoming his/her best self
- Education is the shared responsibility of the school community
- A safe and nurturing environment is key to growing our students academically, socially, and emotionally
- We develop students who are problem solvers that are prepared to adapt to our ever changing world

The B.B. Owen school community strives to build a positive and safe school atmosphere where all stake holders feel welcome. Collaborative opportunities allow great thinkers to develop and make learning a fun adventure inside and outside of the classroom.

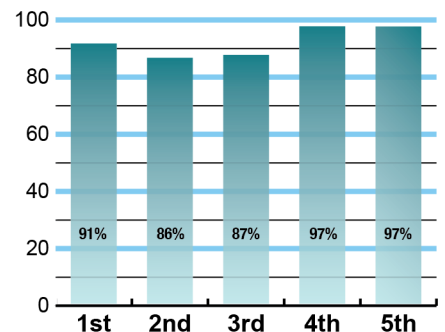
Our Bobcat family places the needs of our students at the center of all that we do.



ACADEMIC PERFORMANCE

Istation by grade level

Lewisville ISD monitors students' reading progress through the Istation computer program. Teachers can quickly assess which students need help. This chart shows the percent of students reading on grade level or showing six months growth at the end of the school year.



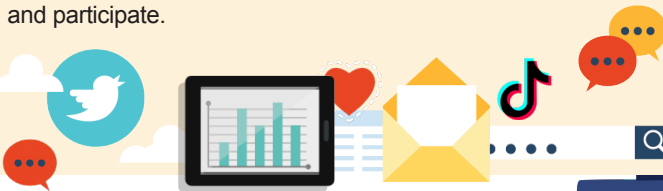
CLUBS

Clubs provide opportunities for students to engage in learning of their choice beyond the classroom. Some of ours include Sprinters Running Club, Junior Librarian, STEM Robotics, FMLM club (Music Listening), Ukulele Club, Honor Choir, Student Council, and Art.

DIGITAL CITIZENSHIP



Earning the Common Sense School badge is a symbol of our school's dedication and commitment to helping students think critically and use technology responsibly to learn, create, and participate.



PROGRAMS

Our campus offers unique programs to help our students grow. Some of ours include Second Step, Restorative Practices, Student Houses, Gifted and Talented, English as a Second Language and Communication Classes for students with moderate to severe autism. We offer Extended School Day, too.



ARTS AND ATHLETICS



100%
Participation in athletics or physical education

100%
Participation in fine arts such as music and art

AWARDS AND RECOGNITIONS

- Student PRIDE Awards
- Common Sense Media Campus
- Crest Award 2022-24
- Distinction Designations: Comparative Closing the Gaps
- Coach Cox's Kid's Chase: Top school participation award
- LEF Grants

Survey said...



What our parents think

In April 2024, parents were surveyed about the campus their child attends. Values represent the percentage of respondents who agreed with each statement. Based on 48 responses.

Are satisfied overall	98%
Most of the time, my child is happy at school	94%
My child's health and wellness are supported	100%
Parents feel welcomed at school and are involved	100%
School staff communicates well with families	94%
Teachers do whatever it takes to help my child meet academic standards	96%

What our students think

In April 2024, we asked 4th and 5th grade students about adults they could confide in at our school. Values represent the percentage of students who agreed with the following.

There is a staff member at my school with whom I feel comfortable talking	95%
---	-----



B.B. OWEN ELEMENTARY SCHOOL

Home of the Bobcats
The Colony, Texas

Jennifer Barentine, Principal

