

Southridge Elementary School Campus Profile

SCHOOL HOURS 7:45 a.m. to 3 p.m. **GRADES** Kindergarten through 5th grade
ONLINE lisd.net/southridge | facebook.com/southridgees | x.com/SouthridgeES

STUDENT INFORMATION

613 Students
 91.6% Average daily attendance

STAFF INFORMATION

68.5 Total staff members
 8.9 Average number of years teaching experience
 6.0 Average number of years teaching in LISD schools

PROFESSIONAL LEARNING

Total number of hours the staff spent developing their job skills last year

4206

48.3

Average professional learning hours per Lewisville ISD staff member



OBSERVATION

Number of administrator visits to observe class instruction

174

58 Average number of classroom visits per administrator

Our mission

Engage, encourage and empower lifelong learners and leaders.

At Southridge Elementary we believe:

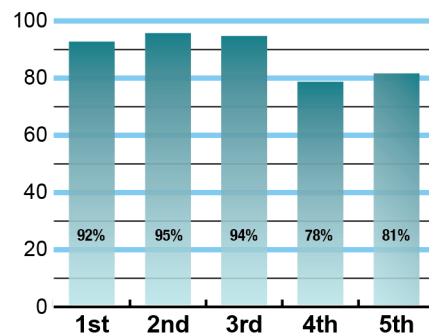
- It is important to engage students in meaningful and diverse learning experiences
- It is vital to encourage students to realize their potential for academic growth
- Students should be empowered to be productive problem solvers in both academic and social environments
- Education is maximized when the responsibility is shared between students, staff, families, and community
- Southridge students positively impact their community by becoming lifelong learners and leaders



ACADEMIC PERFORMANCE

Istation by grade level

Lewisville ISD monitors students' reading progress through the Istation computer program. Teachers can quickly assess which students need help. This chart shows the percent of students reading on grade level or showing six months growth at the end of the school year.



CLUBS

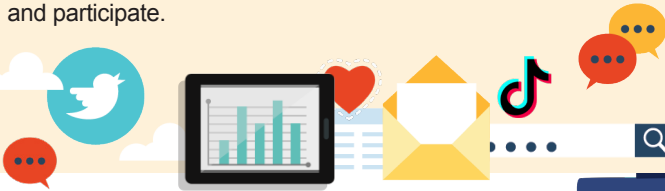
Clubs provide opportunities for students to engage in learning of their choice beyond the classroom.

Some of ours include Chess Club, Choir, Circle of Friends, Book Club, Rise Up! Girls, Garden Club, STEM Club, Robotics Club, and Running - 5K by May!

DIGITAL CITIZENSHIP

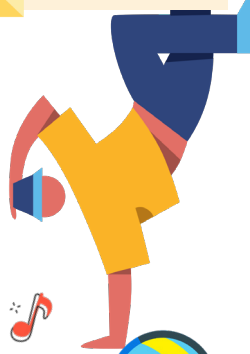


Earning the Common Sense School badge is a symbol of our school's dedication and commitment to helping students think critically and use technology responsibly to learn, create, and participate.



PROGRAMS

Our unique programs help our students become better learners and leaders. Some of ours are DUAL Language, Safe and Civil Schools, Restorative Practices, Dragon Readers, Partnership with Valley Creek Next Steps Center, and Helping Hands for Little Hearts Power Snacks Program. We offer Extended School Day, too!



ARTS AND ATHLETICS



100%

Participation in athletics or physical education

100%

Participation in fine arts such as music and art

AWARDS AND RECOGNITIONS

- TSCA CREST Award for Counseling Excellence 2022-2023 and 2023-2024
- National PTA School of Excellence 2020-2022 and 2021-2023
- Common Sense Media Campus 2022-2024
- Kindness Certified School

Survey said...



What our parents think

In April 2024, parents were surveyed about the campus their child attends. Values represent the percentage of respondents who agreed with each statement. Based on 99 responses.

Are satisfied overall	93%
Most of the time, my child is happy at school	96%
My child's health and wellness are supported	93%
Parents feel welcomed at school and are involved	93%
School staff communicates well with families	92%
Teachers do whatever it takes to help my child meet academic standards	95%

What our students think

In April 2024, we asked 4th and 5th grade students about adults they could confide in at our school. Values represent the percentage of students who agreed with the following.

There is a staff member at my school with whom I feel comfortable talking	84%
---	-----



SOUTHRIDGE ELEMENTARY SCHOOL

Home of the Rockets
Lewisville, Texas

Wyvonna Ulman, Principal

