

# Peters Colony Elementary School

## Campus Profile

**SCHOOL HOURS** 7:45 a.m. to 3 p.m. **GRADES** Pre-K through 5th grade  
**ONLINE** [lisd.net/peterscolony](http://lisd.net/peterscolony) | [facebook.com/peterscolony](https://facebook.com/peterscolony) | [x.com/PetersColonyES](https://x.com/PetersColonyES)

### STUDENT INFORMATION

**560** Students  
**93.2%** Average daily attendance

### STAFF INFORMATION

**67.98** Total staff members  
**14.6** Average number of years teaching experience  
**11.0** Average number of years teaching in LISD schools

### PROFESSIONAL LEARNING

Total number of hours the staff spent developing their job skills last year

**4186**

**52.3**

Average professional learning hours per Lewisville ISD staff member



### OBSERVATION

Number of administrator visits to observe class instruction

**317**

**106** Average number of classroom visits per administrator

### At Peters Colony Elementary:

We provide a real-world education that enables students to take their learning beyond the classroom. We believe this is accomplished through:

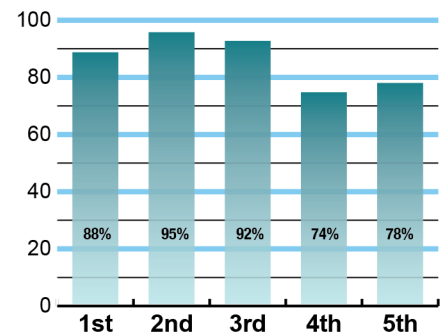
- Dual language programs in all grade levels teaching students academic and conversational English and Spanish
- Extracurricular activities that give students the opportunity to pursue their individual interests and student leadership possibilities
- Building relationships among school members, families, Communities in Schools and community mentors
- A diverse staff and student population
- Availability of multiple forms of technology for all students and staff



### ACADEMIC PERFORMANCE

#### Istation by grade level

Lewisville ISD monitors students' reading progress through the Istation computer program. Teachers can quickly assess which students need help. This chart shows the percent of students reading on grade level or showing six months growth at the end of the school year.



## CLUBS

Students engage in learning of their choice beyond the classroom through clubs. Ours include Chess Club, Pep Squad, National Elementary Honor Society, Student Council, Junior Librarians, Running Club, Book Club, Rise Up Girls, Boys2Men, Horticulture Club, Beautification Crew, and Safety Patrol.



## What our parents think

In April 2024, parents were surveyed about the campus their child attends. Values represent the percentage of respondents who agreed with each statement. Based on 94 responses.

Are satisfied overall	95%
Most of the time, my child is happy at school	94%
My child's health and wellness are supported	90%
Parents feel welcomed at school and are involved	95%
School staff communicates well with families	89%
Teachers do whatever it takes to help my child meet academic standards	85%

## What our students think

In April 2024, we asked 4th and 5th grade students about adults they could confide in at our school. Values represent the percentage of students who agreed with the following.

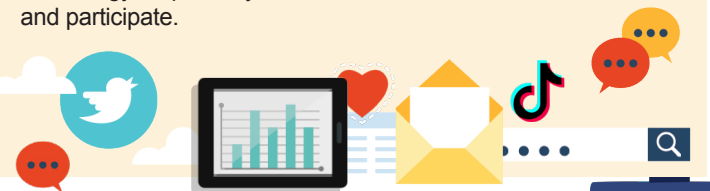
There is a staff member at my school with whom I feel comfortable talking	88%
---	-----



## DIGITAL CITIZENSHIP



Earning the Common Sense School badge is a symbol of our school's dedication and commitment to helping students think critically and use technology responsibly to learn, create, and participate.



## PROGRAMS

Our campus offers unique programs to help our students become better learners, leaders, and friends. Some of ours include Gifted and Talented, Restorative Practices, Extended School Day, full day Pre-K, Character Counts, Safe & Civil Schools, Communities in Schools, and Dual Language.



## ARTS AND ATHLETICS

**100%**  
Participation in athletics or physical education

**100%**  
Participation in fine arts such as music and art



## AWARDS AND RECOGNITIONS

- ENERGY STAR certified school
- Superior Rated Choir
- PTA Apple Award
- Counselor's CREST Award
- STUCO Honor Council
- Apple Distinguished School
- STUCO Leadership Top 10 Recognition

## PETERS COLONY ELEMENTARY SCHOOL

Home of the Panthers  
The Colony, Texas

*Rebecca Chirinos, Principal*

