

McAuliffe Elementary School

Campus Profile

SCHOOL HOURS 7:45 a.m. to 3 p.m. **GRADES** Pre-K through 5th grade
ONLINE lisd.net/mcauliffe | facebook.com/mcauliffeelementary | x.com/McAHighlander

STUDENT INFORMATION

529 Students
95.0% Average daily attendance

STAFF INFORMATION

49.58 Total staff members
12.5 Average number of years teaching experience
10.0 Average number of years teaching in LISD schools

PROFESSIONAL LEARNING

Total number of hours the staff spent developing their job skills last year

3174

53.8

Average professional learning hours per Lewisville ISD staff member



OBSERVATION

Number of administrator visits to observe class instruction

388

194 Average number of classroom visits per administrator

At McAuliffe Elementary, we believe:

- A safe and inclusive learning environment is paramount to student success
- Partnerships with families and community members foster authentic learning through real-world application
- Learning can, and should, be exciting
- Students should develop grit, problem solving, empathy, and leadership skills to be the leaders of the future

The McAuliffe staff strives to meet academic, emotional, social, and physical growth of all students. We strive to educate the whole child by employing high academic standards through design thinking and the integration of problem-solving skills, along with regular character education lessons and opportunities to think and build daily. Working together and learning from mistakes makes success exciting. Daily STEM opportunities provide learners the opportunity to become problem solvers and innovators while finding their place in the community and world.

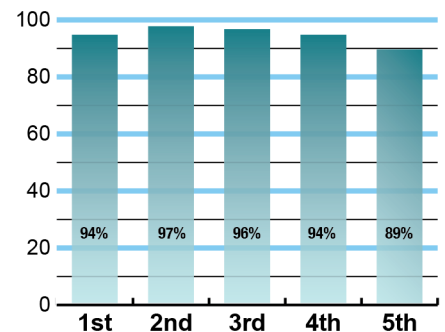
Through varied clubs and extracurricular programs, along with a deep-rooted connection to our feeder pattern, McAuliffe staff works diligently to connect students with a passion or interest. Our goal is to find a connection with every child and family.

By establishing partnerships with family and community members through school events, speakers, volunteers, and activities, McAuliffe learners gain authentic-learning experiences spanning each aspect of their lives. The McAuliffe staff anticipates that our family made up of teachers, children, parents, grandparents, guardians, volunteers, and community grow together in a safe, inclusive environment every day.

ACADEMIC PERFORMANCE

Istation by grade level

Lewisville ISD monitors students' reading progress through the Istation computer program. Teachers can quickly assess which students need help. This chart shows the percent of students reading on grade level or showing six months growth at the end of the school year.



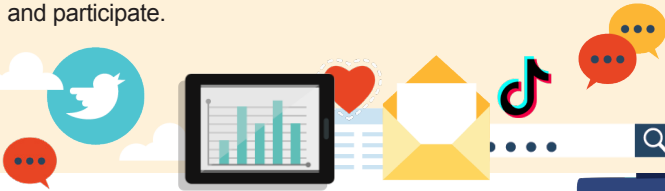
CLUBS

Students engage in learning of their choice beyond the classroom through multiple opportunities both within the school day and after school. These include M&M (4th & 5th grade choir), Student Council, Safety Patrol, Principals Advisory Committee, Sewing, Legos, Chess, Circle of Friends, and Gardening. Additional clubs are available from year to year.

DIGITAL CITIZENSHIP



Earning the Common Sense School badge is a symbol of our school's dedication and commitment to helping students think critically and use technology responsibly to learn, create, and participate.



PROGRAMS

Our campus offers Huddle, SSA Sports, Robotics, Coding, Theatre, and Extended School Day. We participate in art shows, Reflections, Honor Choir, 21-Day Challenge, Fuel Up to Play, Festival of Music Listening Masters, and Academic Olympics. Each day starts with a STEM focus. In 2023-24, we partnered with the Dallas Zoo.



ARTS AND ATHLETICS



100%

Participation in athletics or physical education

100%

Participation in fine arts such as music and art

AWARDS AND RECOGNITIONS

- 2023 State School of Character
- 2021 National School of Character
- Common Sense Media Campus
- 100% Common Sense Media Staff Certified
- American Heart Association Heart Hero Awards for six staff members
- Received CPR Hands-Only kits for campus and district use from Reliant Energy and The American Heart Association
- 21-Day Challenge Award
- CREST Counselor's Award
- Fuel Up to Play 60 Award

Survey said...



What our parents think

In April 2024, parents were surveyed about the campus their child attends. Values represent the percentage of respondents who agreed with each statement. Based on 159 responses.

Are satisfied overall	98%
Most of the time, my child is happy at school	97%
My child's health and wellness are supported	99%
Parents feel welcomed at school and are involved	100%
School staff communicates well with families	99%
Teachers do whatever it takes to help my child meet academic standards	97%

What our students think

In April 2024, we asked 4th and 5th grade students about adults they could confide in at our school. Values represent the percentage of students who agreed with the following.

There is a staff member at my school with whom I feel comfortable talking	93%
---	-----



McAULIFFE ELEMENTARY SCHOOL

Home of the Highlanders
Highland Village, Texas

Jennifer Mattingly, Principal

