

Highland Village Elementary School

Campus Profile

SCHOOL HOURS 7:45 a.m. to 3 p.m. **GRADES** Kindergarten through 5th grade
ONLINE lisd.net/highlandvillage | facebook.com/highlandvillagees | x.com/hv_vikings

STUDENT INFORMATION

378 Students
94.6% Average daily attendance

STAFF INFORMATION

43.01 Total staff members
13.9 Average number of years teaching experience
11.3 Average number of years teaching in LISD schools

PROFESSIONAL LEARNING

Total number of hours the staff spent developing their job skills last year

2420

50.4

Average professional learning hours per Lewisville ISD staff member



OBSERVATION

Number of administrator visits to observe class instruction

264

132 Average number of classroom visits per administrator

What we believe

Vision

We create a family-like community by developing genuine relationships to inspire learners and thinkers.

Mission

Build Relationships, Work Hard, and Have Fun.

At Highland Village Elementary, we believe:

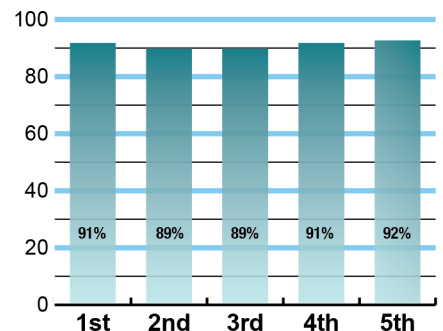
- Students' needs are our #1 priority
- All students can be successful both academically and socially
- Mistakes are an opportunity to make learning more meaningful
- Grit and perseverance are essential components for growth
- Students are more than a test score
- Each person who enters our doors feels valued and safe

"Life is Good at HVE" is our motto. We start with high quality staff who create a safe and nurturing environment. We are committed to designing authentic learning experiences that are based on curriculum standards and refined by data. Embedded throughout these experiences are relevant instruction and assessments that meet every student's academic needs. Our ultimate goal is to prepare our students with academic and social skills so each one is confident and well-equipped with knowledge and problem-solving skills for their future endeavors.

ACADEMIC PERFORMANCE

Istation by grade level

Lewisville ISD monitors students' reading progress through the Istation computer program. Teachers can quickly assess which students need help. This chart shows the percent of students reading on grade level or showing six months growth at the end of the school year.



CLUBS

Clubs provide opportunities for students to engage in learning of their choice beyond the classroom.

Some of our clubs include Student Council; SSA Sports, and Robotics.



What our parents think

In April 2024, parents were surveyed about the campus their child attends. Values represent the percentage of respondents who agreed with each statement. Based on 84 responses.

Are satisfied overall	98%
Most of the time, my child is happy at school	99%
My child's health and wellness are supported	98%
Parents feel welcomed at school and are involved	99%
School staff communicates well with families	98%
Teachers do whatever it takes to help my child meet academic standards	96%

What our students think

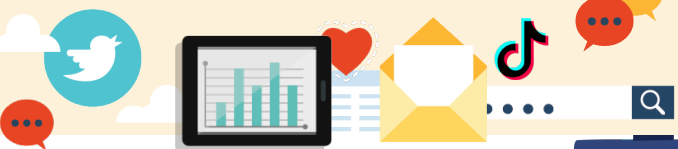
In April 2024, we asked 4th and 5th grade students about adults they could confide in at our school. Values represent the percentage of students who agreed with the following.

There is a staff member at my school with whom I feel comfortable talking	91%
---	-----



DIGITAL CITIZENSHIP

Earning the Common Sense School badge is a symbol of our school's dedication and commitment to helping students think critically and use technology responsibly to learn, create, and participate.



PROGRAMS

Our campus offers unique programs to help our students grow. Some of ours include school-wide Character Education, Choir (4th-5th Grades), Safety Patrol (3rd-5th Grades), Kindness Ambassadors, BTS Crew (set up crew for FUN-Arts programs), and KVKG announcements. We offer Extended School Day, too.



ARTS AND ATHLETICS

100%
Participation in athletics or physical education

100%
Participation in fine arts such as music and art



AWARDS AND RECOGNITIONS

- Voted as one of the top 3 elementary schools in Denton County 2023
- National PTA School of Excellence 2020-2022
- ENERGY STAR certified school
- 21-Day Challenge for Healthier Living \$500 Award
- Common Sense School
- Crest Leadership Counseling Excellence Award

HIGHLAND VILLAGE ELEMENTARY SCHOOL

Home of the Vikings
Highland Village, Texas

Leslye Mitchell, Principal

